



# LEPPÄVIRTA - INFORMATION

2010

## Leppävirta Municipality Vision for 2015

**Leppävirta is an attractive location in the midst of development and growth!**

*Leppävirta is an independent township in the expanding city region of Kuopio with extensive cooperative ties to Varkaus.*

*We do our very best to promote well-being, community spirit, participation and self-reliance.*

*Leppävirta is a pioneer of modern entrepreneurship. We offer a continually developing working environment for businesses and attractive employment and living opportunities.*



Content	
Municipality Vision for 2015 .....	2
History .....	3
Location .....	3
Population .....	4
Business and employment .....	5
Housing .....	7
Technical unit .....	8
Social and health services .....	10
Municipal administration .....	14
Key figures of municipal economy .....	15
Education .....	18
Youth welfare .....	19
Culture and sports .....	19
Leisure time and tourism .....	21

## HISTORY

Leppävirta became an independent parish in 1639. Before that it belonged to the Tavisalmi administrative area.

The beautiful Leppävirta waterways have attracted nature-lovers to the area since the 14th century. Even today the same waterways serve as the water traffic route through the Saimaa Canal to the Gulf of Finland.

The municipality's favorable location and long industrial traditions have created a versatile business structure alongside the traditional agricultural and forestry sectors.

## LOCATION

Leppävirta is situated in the province of Eastern Finland, in Northern Savo, by the main road 5 and the Saimaa deep fairway. It includes most of Finland's largest island, Soisalo.

### Total area | 519 km<sup>2</sup>

- land area | 136 km<sup>2</sup>
  - land property of municipality 3 293 hectares
  - town plan zone 948 hectares
- water system 383 km<sup>2</sup>
  - length of shoreline 2 250 km
  - shoreline plan area 3 339 hectares
  - shoreline component master plan areas: Suvasvesi 240 km<sup>2</sup>, Unnukka 136 km<sup>2</sup>, Sorsavesi 66 km<sup>2</sup>
- population density 9,4 inhabitants per km<sup>2</sup> (in 2009)

### Distance from municipal centre

- Kuopio 52 km
- Varkaus 24 km
- Pieksämäki 50 km
- Jyväskylä 135 km
- Helsinki 330 km

## POPULATION

### Population numbers in Leppävirta in 1960–2009

1960	14.705
1970	12.891
1980	11.606
1990	11.633
2000	11.081
2005	10.967
2006	10.921
2007	10.885
2008	10.760
2009	10.633

### The division of population by age on December 31<sup>st</sup>, 2009

(Statistics Centre of Finland)

0 - 14	1 606	15 %
15 - 64	6 624	62 %
65 -	2 403	23 %
Total	10 633	100 %

Leppävirta has three built-up areas: the parish village (4 329) inhabitants, Sorsakoski (940) and Oravikoski (348). The biggest villages are Timola (552) and Paukarlahti (603) the population of which has increased rapidly in the recent years.

## BUSINESS AND EMPLOYMENT

### Division of jobs in 2007

(Statistics Centre of Finland)

Line of business	Jobs	%	Employed labour force	%
Primary production	398	12	400	9
Secondary production	1 262	38	1 493	36
Services	1 607	48	2 249	54
Line of business not known	57	2	57	1
Total	3 324	100	4 199	100

Self-sufficiency in workplaces is 79 %, as the number of employers working outside the municipality is 875 higher than the number of inhabitants of other municipalities working in Leppävirta. The number of inhabitants of Leppävirta working in Varkaus is approx. 700 and in Kuopio approx. 530 (in 2007).

### Average unemployment

(Ministry of Employment and the Economy)

	Leppävirta, persons		Northern Savo %
1990	310	6,1 %	5,8 %
1995	1 062	21,7 %	21,5 %
2000	752	15,7 %	16,0 %
2005	528	11,4 %	12,6 %
2006	504	11,0 %	11,3 %
2007	447	9,6 %	10,1 %
2008	425	9,1 %	9,7 %
2009	606	13,0 %	12,4 %
March 10	637	13,6 %	12,6 %

## The biggest employers in year 31.12.2009 (more than 20 employees)

Leppävirta municipality	721
Danfoss Ltd	133
Iittala Ltd	91
Cramo Production Ltd	77
Gebwell Ltd	68
Högfors GST Ltd	64
Keski-Savon Metsänhoitoyhdistys ry	61
Ukonhattu ry	58
YIT Teollisuus Ltd	54
Holiday Club Vesileppis;	53
- hotell, restaurants (PeeÄssä coop); 26	
- Leppäkerttu Ltd; 11	
- Joint ventures; 16	
Mikenti Ltd	45
Parmarine Ltd	44
Pivaset Ltd	40
Metos Ltd	35
Oplatek Ltd	35
Kohmansalon Metsäkuljetus Ltd	29
Lut. Church	29
Oravikosken Konepaja Ltd	29
Blue Cargo Ltd	24
Hanx	22
Itella Oyj	21
Dimex Ltd	20
PeeÄssä/S-Market Leppävirta	20

## Agriculture and forestry (2009)

• Productive farms	242 St.
• Productive fields	5 600 ha
• Growing forests	86.000 ha
• Milk producing farms	70 St.
- Milk produced	12 Milj.Lit
• Special farms	35 farms
- strawberry	145 ha
- currant	15 ha
- raspberry	20 ha
- outdoor vegetables	90 ha

## HOUSING

### House construction

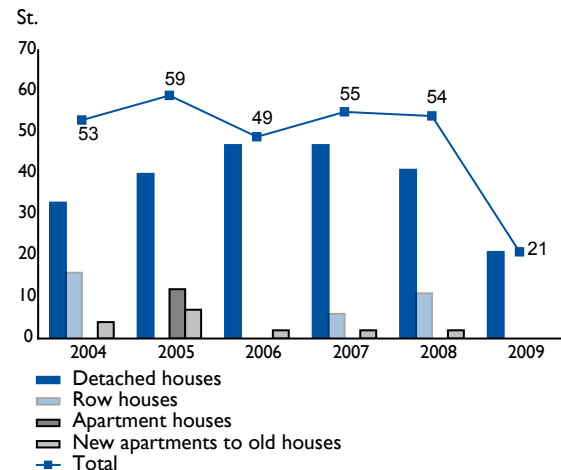
Building permits, detached houses

	2000	2006	2007	2008	2009
built-up areas	13	16	8	10	7
sparsely populated areas	28	28	23	14	11
total	41	44	31	24	18

### Municipality's rented apartments in 2009

Leppävirran Kiinteistö Oy, the real estate company of the municipality, has approx. 420 rented apartments in apartment houses and row houses.

### Apartments built in 2004–2009



## TENCHNICAL UNIT

### Regional environmental board

Keski-Savon ympäristötoimi - an environmental board shared by the municipalities of Heinävesi, Joroinen, Leppävirta, Pieksämäki and Varkaus - offers environmental protection, health inspection and veterinary services. Joroinen participates only on the health inspection and veterinary services parts. The board is stationed in Leppävirta.

### Communal infrastructure

Key figures	Parish village	Sorsakoski	Oravikoski	Timola	total
Streets and bicycle lanes (km)	65,0	16,1	8,6	-	89,7
Water distribution system (km)	118,6	35,8	120,8	18,0	293,2
Sewer system (km)	81,2	16,6	8,5	7,7	114,7

The municipal water and sewage works has drinking water and sewage networks that span the parish village, Sorsakoski, Oravikoski and parts of Timola. Additionally, Paukarlahti has water piping owned by the municipality.

The ground water is taken from base rock burst wells in Pohjukansalo, Heinämäki and Haukilahti and the Voivakka ground water plant. The water and sewage works delivers on average 1,100 m<sup>3</sup> of water per day at rates of euro 1.79 / m<sup>3</sup> for drinking water and euro 2.46 / m<sup>3</sup> for sewage.

There are sewage treatment plants at the parish village and in Oravikoski. At Timola, the water comes from the Varkaus network and the sewage is pumped back into Varkaus. According to a cooperation agreement with Varkaus, the nationally funded construction of drinking water and sewage transfer lines between Varkaus and Leppävirta will be finished in 2011. Once completed the municipality's present wells and the parish village's sewage treatment plant will be taken off line.

On the Soisalo island, drinking water is provided by the Konnuslahti water cooperative in the Konnuslahti-Mustinmäki region and by the Pohjois-Soisalo water cooperative in the Länsi-Saaminen-Reinikkala region. Drinking water and sewage network in Kinkamonniemi region will be build by the Etelä-Leppävirta water cooperative.

Regional heating network of Savon Voima (municipality as a joint owner) includes 25 km with 213 houses. The total capacity is 995 000 m<sup>3</sup>.

### Waste management

The five communes of the Varkaus region share a common waste management system, which is charged with waste transport, picking up of recoverable waste, maintaining the recycling points and running the Riikineva waste treatment plant. The transport services for all communal waste management are bought from a private transport company. Leppävirta has one hazardous waste terminal and eight eco points. Recycling is organized by Varkauden Ekotori.



## SOCIAL AND HEALTH SERVICES

The services fall under the responsibility of the basic welfare department the profit units of which include family services, open care services, care services and hospitals.

Leppävirta participates in a project with the healthcare district of North Savo and eight other municipalities of the region that aims to establish a communally owned company named Kysteri for the provision of basic health-care and institutional care for the elderly. The new unit should begin operations at the start of 2012.

### Family services

Family Services produces social and health care services that are mainly aimed at families.

Children's daycare

Key figures	2007	2008	2009
children in daycare:	331	324	306
- in daycare centres	153	153	159
- in family daycare	129	114	109
- only in preschool	49	57	38
child care subsidy (children)	245	237	214
- in private care (children)	56	51	52
private care municipal supplement (children)	57	51	43
day care centres	4	4	4
group family day care centres	1	2	2
family day carers	30	27	25

Paasonkallio day activity centre for the developmentally challenged, 20 places. One special worker for the developmentally challenged working in the open care. Housing services purchased annually for 28 developmentally challenged persons.

Three mental health workers for adults, one for young people. Housing services purchased annually for 20 mental health rehabilitants.

Two family counselling centre workers. Maternity care at the parish village, child welfare clinics in three villages. One family worker with preventive work on problems of families with children as the key task.

Three social workers, one office worker dealing with subsistence subsidy, and the chief social worker / child welfare officer. In addition, one social worker at the employment service centre Paletti, and one educational counsellor in the schools of Leppävirta.

Key figures	2007	2008	2009
Households receiving subsistence subsidy	478	477	447
Days of Institutional care in intoxicant care	376	461	340

### Ambulatory services

Ambulatory services produce services of social and health care, which support the activity and coping at home, in working life and free time of the inhabitants of the municipality. Coping at home of the chronically ill patients is secured with the help of consultation activities and care services of the home care as much as possible population responsibly. The ability to work and self-motivation are maintained with health promoting and rehabilitating work measures.

The municipality's own health centre offers all basic health care services. The centre uses a personal doctor/nurse system based on geographical division. Each of the 6 regions also has its own home call nurse and home help staff.

The dental care unit has 4 dentist/assistant pairs and 2 dental care nurse. Citizens of all ages are eligible for dental care.

The laboratory of Leppävirta health centre has been working under Itä-Suomen Laboratoriokeskus ISLAB since the beginning of 2008. Occupational health care of the health centre has been part of the regional occupational health care of Soisalo since the beginning of 2008.

Key figures	2007	2008	2009
visits to doctor	27 053	24 809	22 562
visits to dentist	12 554	13 331	12 495
days of care by special health care*	9 108	9 024	9 300
visits to special health care outpatient clinics*	13 501	14 657	14 534

\*Kuopio University Hospital and Varkaus, in total

Doctor and nurse reception times may be reserved workdays between 8.30–9.30 am and 12.30–1.30 pm

Physician on duty at health centre Mo – Fr 3.00 – 8.00 pm  
Sa – Su 8 am – 8 pm

Nightly polyclinic at the Varkaus Hospital daily 8 pm–8 am  
Nightly polyclinic at the Kuopio Polyclinic (KYS) daily 10 pm–8 am

## Hospitals

Leppävirta is a member municipality of the Northern Savo Hospital District, and it obtains its special health care services from the Kuopio University Hospital and the Varkaus Hospital.

### Bed side care

#### • Home care

With the help of home care services the elderly and the chronically ill can manage their daily lives at home as long as possible. Home care also includes support services such as issues involving subsidy for care provided by relatives; food, sauna, transport and security services. The service voucher is available for long-term care and temporary help. Also such family care givers, who are not entitled to family caring allowance, can receive a voucher. Daytime activity for the elderly is organised four days a week at the Leivola facilities and once a week at Sorsakoski. In addition the home care service organises a service day for the elderly at Konnuslahti once a week.

#### • Tilda brings services to the villages

The library-and-services bus Tilda, commissioned in autumn 2008, offers healthcare services aimed particularly at the elderly people.

#### • Bed care wards

The health centre has three wards with a total of 80 beds. Ward 1 is for patients who require short term treatment. Bed care Ward 2 has six beds for patients in rehabilitation e.g. from surgery or stroke.

The task of the rehabilitation unit is to promote the quick and safe rehabilitation of patients to home care. Approx. half of the bed care ward patients falls within the scope of long-term care.

#### • Elderly Accommodation Services

The municipality has service apartments for the elderly at the Leivola service centre (61 places) and the Riihikoti home (16 places); in addition, there is one apartment for a group of four residents.

At the Leivola service centre, the staff is available for service and care between 6.45 am and 9.15 pm. Night time care is provided by the night patrol.

The Riihikoti home offers around the clock service and care.

Short term care apartment and shift care places are at the Leivola service centre and at the bed care Ward 2.

In addition to the previously mentioned services, the municipality purchases care services from private contractor.

Key figures	2007	2008	2009
home help service households	199	201	181
service voucher customers	40	36	29
family care support customers	74	74	80
daytime service customers	94	99	105
service housing and shift care places for the elderly	64	64	64
outsourced service housing places for the elderly	12	11	11
days of care at the wards	37 464	36 629	35 990



## MUNICIPAL ADMINISTRATION

### Representatives of political parties in the municipal council and municipal executive board in 2010

	Council	Executive board
Finnish Centre Party	17	4
Finnish Social Democratic Party	7	2
Leppävirta Movement	3	1
National Coalition Party	3	1
Left-Wing Alliance	2	-
Christian Democrats in Finland	2	-
True Finns Party	1	-
Total	35	8

### Chairmen of the council in 2009-2010

Chairman Mr Aku Tuomainen, senior criminal constable, Centre Party

Vice-chairwoman Mrs Leena Kaulamo, Administrative Director, National Coalition Party

Second vice-chairman Mr Reijo Sikanen, storeman, League of the Left

Municipal Manager Mr Matti Raatikainen

Municipal Secretary Mr Mauri Häkkinen

Municipal secretary for trade and industry Mr Pekka Kansanen

### Department heads

Administrative and Financial Department: Mr Tapani Latikka

Social Welfare Department: Mrs Paula Tiihonen

Department for Environmental and Technical Services: Ms Virve Wright

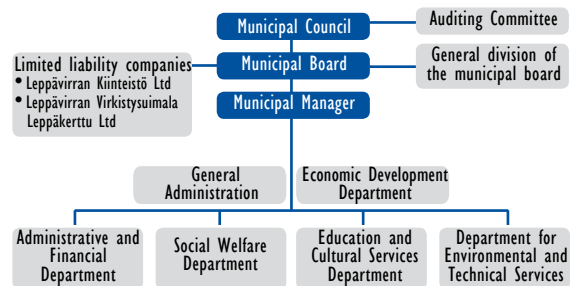
Education and Cultural Services Department: Mr Taisto Kainulainen

### Municipal personnel

Municipal salary control services are produced by Kuhilas Ltd.

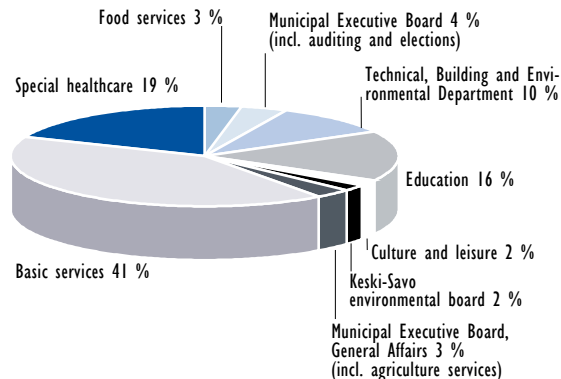
Key figures	2007	2008	2009
Number of employees	733	732	721
- regular employees	589	582	595
- fixed-term employees	144	144	126

## Municipal Group of Leppävirta



## KEY FIGURES OF MUNICIPAL ECONOMY

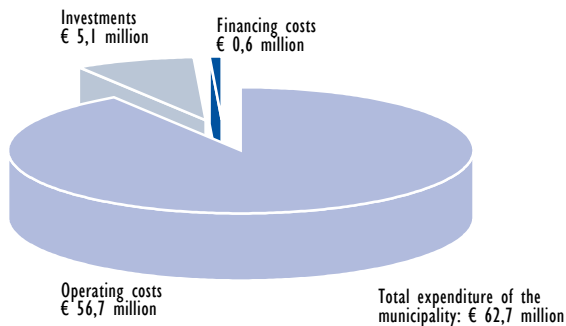
### Distribution of gross outlay (balance sheet 2009)



## Taxation

	2008	2009	2010
Tax %	18,5	18,5	19,0 budget
Real estate tax %			
- general	0,83	0,83	0,83
- permanent apartment	0,33	0,33	0,33
- other apartment	0,86	0,86	0,86
- unbuilt building site	1,00	1,00	1,00

## Total expenditure of the municipality in 2009 (external)



## Business economics and operational information according to tasks 2006–2008

net costs € / Inhabitant (Statistics Centre of Finland)

	Leppävirta			Northern Savo		
	2006	2007	2008	2006	2007	2008
social welfare	2 593	2 691	2 865	2 625	2 805	3 001
education and cultural services	1 006	1 051	1 057	1 043	1 061	1 108
other services	362	295	262	217	212	253
general administration	66	88	111	121	134	150
business economics total	4 027	4 125	4 295	4 006	4 212	4 512

## 2009 financial statements

BALANCE OF ACCOUNT (Mil. Euro) (inclusive inner amounts)	2007	2008	2009
Operating revenues	10,1	10,4	11,6
Operating costs	- 51,4	- 53,5	- 56,7
<b>Operating margin</b>	<b>- 41,2</b>	<b>- 43,1</b>	<b>- 45,0</b>
Tax revenues	27,2	28,6	28,6
State subsidies for current expenditure	18,0	18,7	20,1
<b>Annual margin</b>	<b>4,3</b>	<b>4,6</b>	<b>4,4</b>
Deprecations on the capital assets	- 3,6	- 3,6	- 3,7
Result of the accounting period	0,7	1,0	0,7
<b>Net profit / deficit of the year</b>	<b>0,6</b>	<b>0,9</b>	<b>0,6</b>

Key figures	2007	2008	2009
Operating income from the operating expenditure %	19,7	19,5	20,5
Annual margin of the depreciations %	119,0	127,5	120,6
Annual margin in Euro / Inhabitant	393	434	420
Income financing of the investments %	115,4	60,4	97,0

BALANCE SHEET (Mil. Euro)	2007	2008	2009
<b>ASSETS</b>			
Non-current assets	50,2	53,8	50,8
Assets of the assignments	0,3	0,2	0,1
Current assets	7,3	7,0	10,5
<b>Total assets</b>	<b>57,8</b>	<b>61,1</b>	<b>61,5</b>
<b>LIABILITIES</b>			
Equity capital	47,2	48,2	48,9
Capital of the assignments	0,6	0,5	0,4
Creditors	10,0	12,4	12,2
<b>Total liabilities</b>	<b>57,8</b>	<b>61,1</b>	<b>61,5</b>

Key figures	2007	2008	2009
Solvency ratio %	81,7	79,0	79,6
Financial assets and liabilities (Euro / Inhabitant)	- 261	- 511	- 167
Loans (Euro / Inhabitant)	257	509	456

## EDUCATION

### Schools (2010-2011)

	Schools	Pupils	Teachers
Comprehensive			
- Junior level (forms 1 – 6)	8	700	46
- Senior level (forms 7 – 9)	1	350	34
- Special school	1	30	4
Senior Secondary School	1	150	10

The size of a teaching group on grades 1-6 approx. 16 pupils per group and on grades 7-9 approx. 16 pupils per group.

In the 2010-2011 period there are a total of 84 preschool children. Preschool teaching organised by the educational service is provided at the Mustinsalo school. Preschool teaching organised by the basic welfare department is provided at the parish village in the Puistola and Ilonpilleri daycare centres and at the preschool Omenatarha. Also in the daycare centres of Sorsakoski, the Viitosvintiöt daycare centre at Oravikoski, the Timola group family daycare centre and the Kurjala preschool group.

### Soisalo Institute

Since the beginning of 2008, courses of the adult education centre as well as classes in art and adult education are organized in Leppävirta by Soisalo Institute. It works as an educational establishment maintained by the city of Varkaus in Heinävesi, Joroinen, Leppävirta and Varkaus as well as for comprehensive syllabus of basic instruction in art also in Pieksämäki.

Adult Education Centre	2007	2008	2009
study groups	153	236	312
students			
(once counted 2007)	1 507	2 543	2 227
hours of teaching	6 403	6 663	7 169
Leppävirta Art School	2007	2008	2009
hours of teaching	1 991	1 831	1 982
students			
- Spring	45	41	40
- Autumn	38	64	52

### Savo Institute of vocational and adult education; Ammattipaja

Owner: Savon koulutus kuntayhtymä  
Construction and timberwork. Cleaning service and dismantling, sorting and recycling of waste electrical and electronic equipment.

## YOUTH WELFARE AND YOUTH CLUB

Afternoon clubs, varied club evenings, games, camping trips, events are an essential part of the activities of the youth bureau. The Youth Department grants allowances as instructors' fees to organisations and action groups arranging youth club activities. The Youth Department has a youth facility with an office at the parish village and in Sorsakoski. Youth activities are organised also at Niinimäki, Näätäntmaa, Sarkamäki, Paukarlahti, Konnuslahti and Reinikkala.

## CULTURE AND SPORTS

Leppäkerttu Ltd produce sports and cultural services. The company owned by the municipality is also responsible for the operation of the spa, ice hall and Kymppiarena (cross-country skiing arena) as well as administrates and rents the hotel and restaurant real estate.

The culture department maintains the local museum, arranges yearly events, supports the cultural activities of societies and schools and keeps in contact with Leppävirta's twin cities in matters of cultural activity.

Sport services is responsible for planning and producing the municipal sports services together with sport organisations, for outdoor and indoor sport places, their care and reservation. Part of the special sports services is bought from entrepreneurs.



## Physical training of special groups

Key figures	2007	2008	2009
visits	11 681	10 500	10 751
participants	765	735	741
groups	27	22	22

The major physical training sites are presented on page 21 - 22. In the sparsely populated area there are also 4 tennis courts, 8 icehockey rinks, a swimming beach, a bowling alley, 12 fields for ball games and 5 indoor ball game venues. Lighted jogging and trekking paths in all built-up areas and in Mustinmäki and Itä-Saamainen.

## Library

The library services consist the main library in the centre of Leppävirta and the mobile library. In addition to the material to be lent, the library has five computers which the customers may use. In Leppävirta library there are 95 000 books and 12 000 other material.

About 20 % of the lending is done at the mobile library. Tilda library and service bus offers a wheelchair elevator, internet connection, printing/copying service, postage stamp sales and a possibility to transport goods (e.g. from the pharmacy) or a couple of people.

Key figures	2007	2008	2009
visitors	134 000	110 106	109 968
customers	4 550	4 431	4 325
lendings	236 500	228 712	225 978
lendings per inhabitant	22	21	21
transactions at the Internet service	15 000	15 016	16 526

## LEISURE TIME AND TOURISM

In conjunction with Holiday Club Vesileppis:

### Leppävirta Ice Hall

- Canada style rink (official size)
- 4 dressing rooms
- stand for 400 persons, storage, monitoring and skate sharpening rooms

### Vesileppis Water Paradise

- 6 lanes (à 25 m), water area 600 m<sup>2</sup>, tropical temperature (+32°C)

### Kymppi Areena

- cross-country skiing and multi-function arena within the bedrock 30 m beneath the hotel
  - about 1,5 km skiing track, Areena length 100 m, width 40 m, height 10 m, tunnel section length 200 m, width 16 m and height 5 m (total 8 000 m<sup>2</sup>), also biathlon is possible
- Also sports hall and gym.



## Vokkola Sports and Recreation Services

Athletics field with Novotan surface, Finnish baseball field (artificial sand lawn), grass football field, basketball court, ice hockey rink, dressing and washing facilities, 2 tennis courts, skating park, kids' traffic park, swimming beach, jogging/trekking paths / skiing trails: 15 km (10 km with lighting)

## Other Sports Facilities

Konnus-Golf (9 hole) next to main village

## Outdoor recreation, camping

- 130 km network of skiing trails: Soisalo Island, 60 km; Leppävirta-Sorsakoski trail, 15 km; Sorsakoski-Heinämäki skiing cabin (Varkaus), 14 km, 1 lean-to shelter
- Orinoro nature path, 7 km, lean-to shelter
- Pajaharju farm nature path, 3 km, lean-to shelter
- Särkiniemi and Härkäjoki lean-to shelters
- Iisvesi-Unnukka canoeing route 70 km; 3 lean-to shelters in Leppävirta
- Varkaus-Kuopio snowmobile route; 56 km in Leppävirta

Internet map: Pohjois-Savo hiking routes <http://www.infokartta.fi/psavo/>

## Tourism

### Accommodation and restaurant services

- 1 Hotel; 131 rooms, ca. 520 Beds, pub, Restaurant, Café, places for 1 000 guests
- 3 restaurants for about 1 600 customers
- 2 café-restaurants (100 places)
- 8 bars, cafés (300 places)
- 63 holiday cottages for renting (400 Beds)
- 2 farms with guest accommodation
- 1 camping site; 18 camping cottages (75 beds), 32 caravan places

## Port services

- Unnukka guest harbour
- VP Rantaparkki; service harbour along the deep-water channel
- Konnus channel area

## Annual events

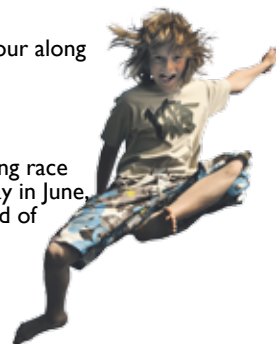
Soisalo skiing event and Trotting race on ice in March, Leppävirta Day in June. Rowing event around the island of Parkkola, Unnukka sailing, Unnukka spinning and Harjula Music Camp in July.


## Sights

- Old stone church (seating 2 200), designed by C.L. Engel, 1846
- Unnukka Tourist Centre, with littala outlet as well as Kermansavi factory outlet, tourist information and lunch café Unnukka
- Kymppi Areena; The skiing and multifunction arena
- Leppävirta bridge; 26-metre unobstructed overhead clearance at Saimaa deep-water channel
- Konnus Canal area; three canals of different ages, fishing and café
- Orinoro gorge in Mustinmäki
- Local Heritage Museum next to Leppävirta church
- Pajaharjun Muatila farm and Kotjmmuseo museum in Konnuslahti

## Cities twinned with Leppävirta

- Schwerte, Germany
- Storfors, Sweden
- Orissaare, Estonia
- Dovre, Norway



A scenic view of a lake with a fountain, a house, and trees. The fountain is on the right, spraying water upwards. In the background, there is a house with a white car parked in front of it. The lake is surrounded by lush green trees and a large tree trunk is visible on the left side of the frame.

**More information about Leppävirta:  
Municipal Manager**

Matti Raatikainen

☎ +358 (0)17 5709 201, +358 (0)44 7906 082

**Trade promoter**

Pekka Kansanen

☎ +358 (0)17 5709 204, +358 (0)40 556 9800

**Address:**

Municipal Leppävirta, Savonkatu 39,

P.O. Box 4, FI-79101 Leppävirta

Telephone: +358 (0)17 5709 11

Fax: +358 (0)17 5709 393

**E-Mail:** [kunta@leppavirta.fi](mailto:kunta@leppavirta.fi) or  
[name.familyname@leppavirta.fi](mailto:name.familyname@leppavirta.fi)

**[www.leppavirta.fi](http://www.leppavirta.fi)**